



Shri Amolak Jain Vidya Prarsarak Mandal's
Smt.S.K.Gandhi Arts, Amolak Science &
P.H. Gandhi Commerce College,
Kada, Dist - Beed (M.S.) 414202



Institutional Gender sensitization action plan

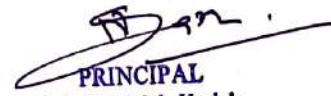
The institute is committed for holistic development of all the stakeholders. The college provides co-education for UG, PG and research. Apart from academic development, the institute is committed for safety, security, self esteem of genders, equal concern for girls and boys admitted in the college for the purpose of implementation and participation in academic, administration, curricular, co-curricular and extracurricular activities. An annual gender sensitization plan is a document that outlines the steps that college takes to promote gender sensitivity and equality on campus. It includes a variety of initiatives and activities aimed at raising awareness about issues related to gender, promoting respect and understanding among students, faculty, and staff, and addressing any issues or challenges related to gender that may arise on campus.

Women's empowerment and gender equality are one of the primary concerns at **Smt. S. K. Gandhi Arts, Amolak Science and P.H. Gandhi Commerce College.**

Annual gender sensitization plan is as follows:

Objective:

- To promote inclusiveness, tolerance, harmony and women's empowerment among the students and staff.
- Conduct activities like Blood donation camp, Aids awareness, female foeticide, dealing with COVID-19 pandemic, etc in order to give back to the society
- Promoting activities related to health, nutrition, self-defence and entrepreneurship among the female students.
- Conduct workshops related to cybercrime, safety and security and career enhancement for female students.
- Provide counselling to the students.
- Mentorship is provided to solve gender-related issues.
- Monitoring with CCTV
- More inclusive and respectful campus culture for all students, regardless of gender


PRINCIPAL

S.A.J.V.P.M. Kada's
Smt.S.K Gandhi Arts Amolak Science
P.H.Gandhi Commerce College,Kada



- Greater support and resources for students who have experienced violence or discrimination



The commitment

- Gender equality
- Equal opportunity
- Zero tolerance for sexual discrimination and abuse
- Establishment of formal mechanism to deal with the issues related to sexual discrimination and abuse
- Conduct of gender awareness and sensitization activities

Action and related bodies

Involved bodies in gender sensitization

- Vishakha committee
- Womens Grievance Redressal cell
- Internal compliance committee
- Literary Association
- Science Association
- NSS
- Cultural committee
- Mentoring/ counseling cell
- Student council

Scope of the activities

Activities based on gender sensitization are at institutional level and in association with university, NGOs, other institutions or government employees.

PRINCIPAL
S.A.J.V.P.M. Kada's
Smt.S.K Gandhi Arts Amolak Science
P.H.Gandhi Commerce College,Kada



Shri Amolak Jain Vidya Prarsarak Mandal's
Smt.S.K.Gandhi Arts, Amolak Science &
P.H. Gandhi Commerce College,
Kada, Dist - Beed (M.S.) 414202



Participation of Female students in Extracurricular Activities

Sr. no.	Activity	Total students participation	Total female students participation	% of female students participation
1	NSS	750	335	44.66%
2	Sports	320	162	50.62%
3	Cultural	600	280	46.66%
4	Women's cell	1180	1125	95.33%
5	Research	81	59	72.83%

The table shows considerable (%) of female student's participation in extra-curricular activities. It underlines the measures initiated by the HEI for promotion of gender equity & gender sensitization.

PRINCIPAL
S.A.J.V.P.M. Kada's
Smt.S.K Gandhi Arts Amolak Science
P.H.Gandhi Commerce College,Kada



Shri Amolak Jain Vidya Prarsarak Mandal's
Smt.S.K.Gandhi Arts, Amolak Science &
P.H. Gandhi Commerce College,
Kada, Dist - Beed (M.S.) 414202



Enrollment of students during the academic year

Year	Total	Male	Female	Percentage
2016-17	1104	766	338	30.62%
2017-18	1130	725	405	35.84%
2018-19	936	580	356	38.03%
2019-20	1156	724	432	37.37%
2020-21	1202	762	440	36.60%
2021-22	932	568	364	39.05%

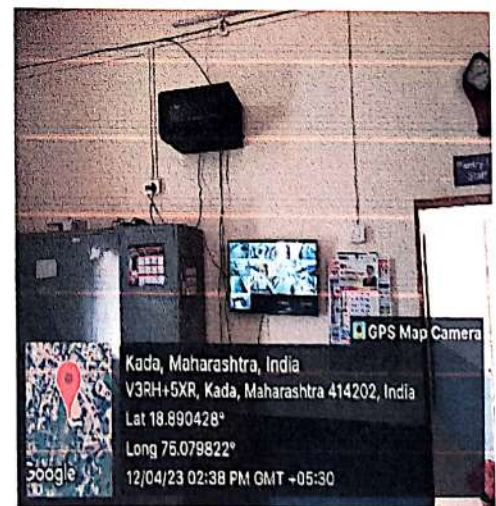
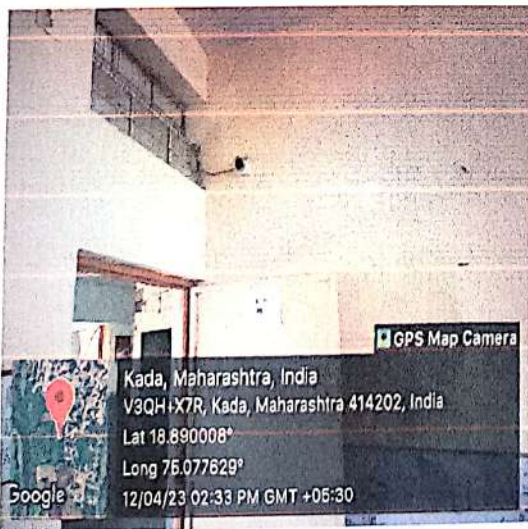
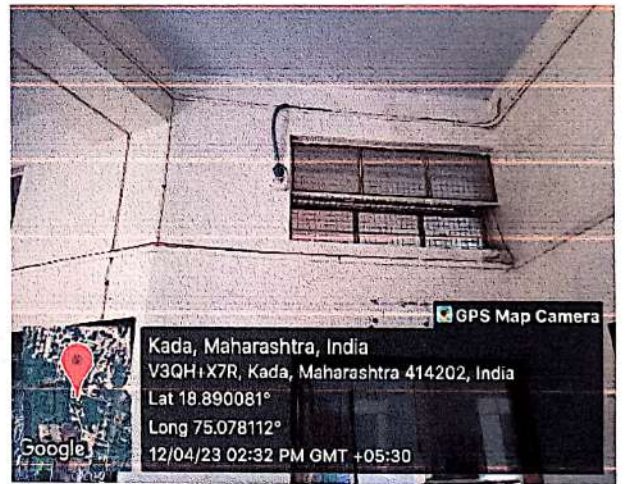
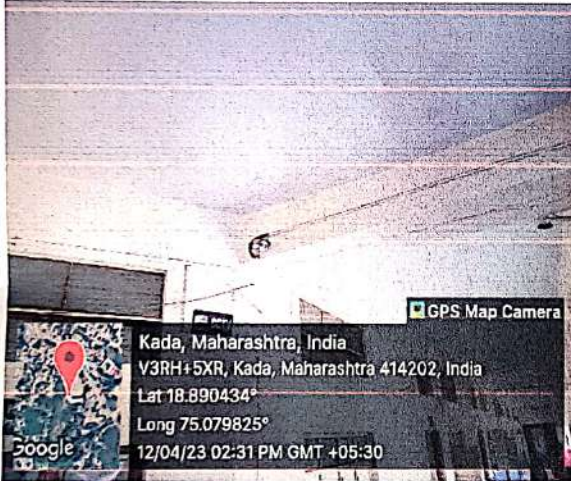
PRINCIPAL
S.A.J.V.P.M. Kada's
Smt.S.K Gandhi Arts Amolak Science
P.H.Gandhi Commerce College,Kada



Shri Amolak Jain Vidya Prarsarak Mandal's
Smt.S.K.Gandhi Arts, Amolak Science &
P.H. Gandhi Commerce College,
Kada, Dist - Beed (M.S.) 414202



Installation of CCTV



S.A.J.V.P.M.

PRINCIPAL
S.A.J.V.P.M. Kada's
Smt.S.K Gandhi Arts Amolak Science
P.H.Gandhi Commerce College,Kada



Shri Amolok Jain Vidya Prarsarak Mandal's
Smt.S.K.Gandhi Arts, Amolok Science &
P.H. Gandhi Commerce College,
Kada, Dist - Beed (M.S.) 414202



Girls counselling session by Faculty members



PRINCIPAL
S.A.J.V.P.M. Kada's
Smt.S.K Gandhi Arts Amolok Science-
P.H.Gandhi Commerce College,Kada



Shri Amolak Jain Vidya Prarsarak Mandal's
Smt.S.K.Gandhi Arts, Amolak Science &
P.H. Gandhi Commerce College,
Kada, Dist - Beed (M.S.) 414202



Girl's common room



PRINCIPAL
S.A.J.V.P.M. Kada's
Smt.S.K Gandhi Arts Amolak Science
P.H.Gandhi Commerce College,Kada

